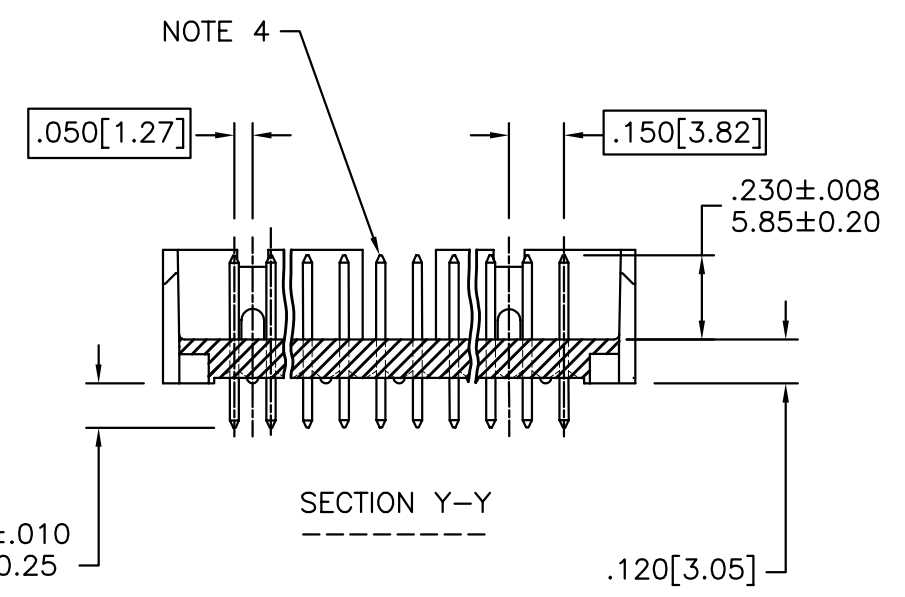
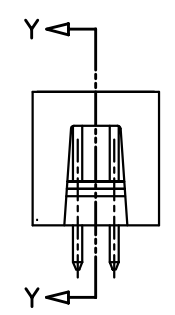
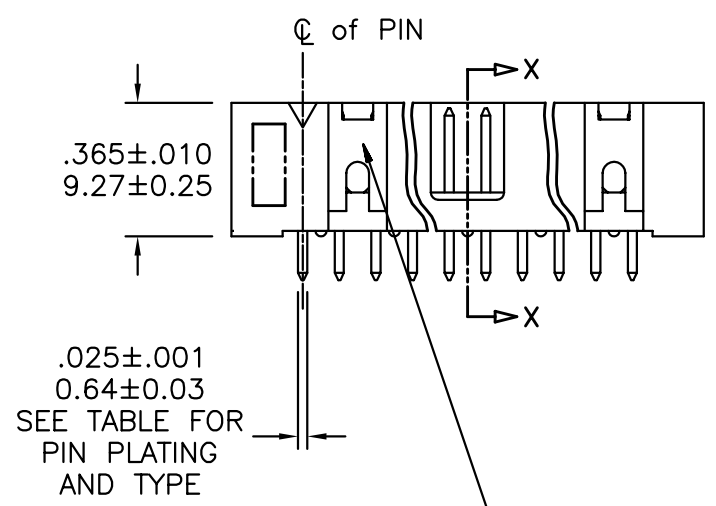
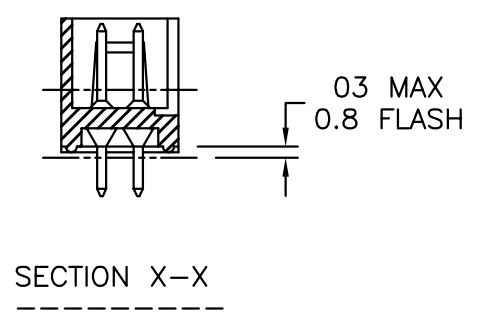
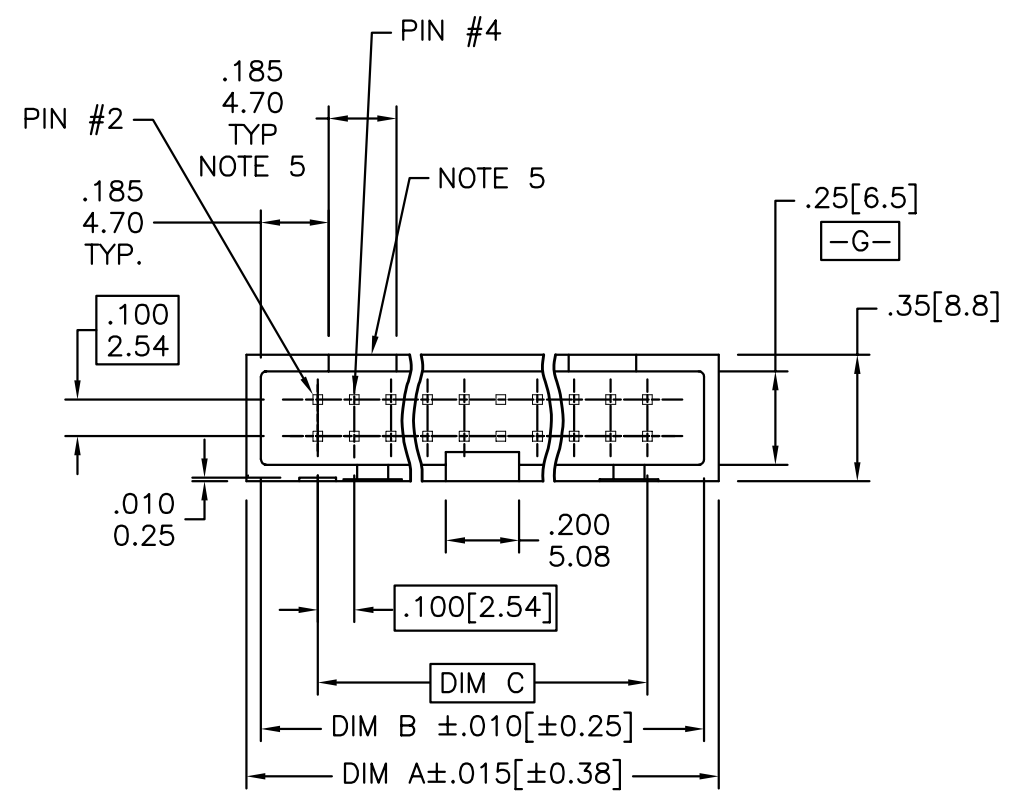


Tous droits strictement reserves. Reproduction ou communication a des tiers interdite sous quelque forme que ce soit sans autorisation ecrite du proprietaire. Propriete de c FCI. Droits de reproduction FCI.

All rights strictly reserved. Reproduction or issue to third parties in any form whatever is not permitted without written authority from the proprietor. Property of FCI. Copyright FCI.



PRODUCT NO.
SEE TABLE



SEE SH. 2 AND TABLE FOR POLARIZATION FEATURE ARRANGEMENT AND STYLE

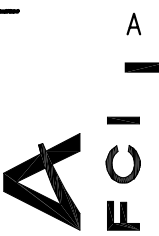
mat'l. code SEE NOTES 1 & 2				tolerances unless otherwise specified		CUSTOMER COPY	FCI www.fciconnect.com	
ltr	ecn no	dr	date	linear	.XX ±.01/0.3		projection INCH/MM	title HEADER, SLIMLINE VERT. ASSEMBLY 4-WALL
B	V61367	MDF	09/19/96		.XXX ±.005/0.13	scale 1:1		product family
C	V70137	SAR	05/16/97	angles	.XXXX ±.0020/0.051			HEADER
D	V70888	SAR	06/06/97		0° ±2°		size	sheet
E	V71117	EPK	09/24/97	dr	M.FETROW 09/19/96		dwg no	1 of 3
	V71292	EPK	09/26/97	enrg	L.FYE 09/19/96		A	
F	V80075	SAR	01/19/98	chr	L.FYE 09/19/96		72250	
G	V21584	GIP	10/02/02	appd	L.FYE 09/19/96			
sheet index	revision	G	G	G				
	sheet	1	2	3				

cage code
22526

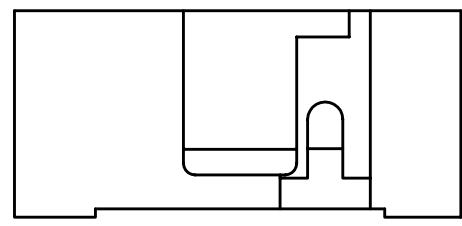
ACAD

Tous droits strictement reserves. Reproduction ou communication a des tiers interdite sous quelque forme que ce soit sans autorisation écrite du propriétaire. Propriete de c FCI. Droits de reproduction FCI.

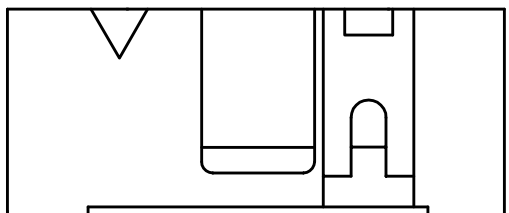
All rights strictly reserved. Reproduction or issue to third parties in any form whatever is not permitted without written authority from the proprietor. Property of FCI. Copyright FCI.



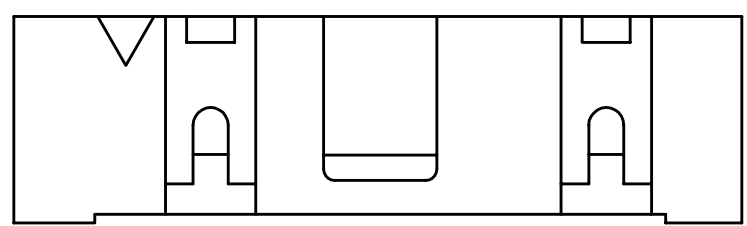
PRODUCT NUMBER
SEE TABLE



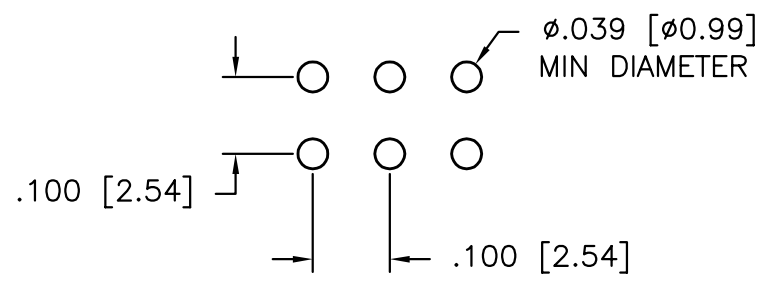
2 X 5
STYLE B - NO TRIANGLE
FOR POSITION #1



2 X 7
STYLE C



2 X 8 & LARGER
STYLE D



RECOMMENDED HOLE PATTERN

NOTES:

- ① PLASTIC MATERIAL: (SEE TABLES)
30% GLASS FILLED,
FLAME RETARDANT PER UL-94-V0
2. PIN MATERIAL: PHOS BRONZE.
- ③ 4 LBS/1.8 KG MIN PIN RETENTION.
- ④ PIN CONTACT SURFACE IS TO BE FREE OF BURRS,
SCRATCHES AND PLASTIC DEBRIS.
- ⑤ FOR SIZES 2 X 5 & 2 X 7, ONLY ONE POLARIZATION SLOT
ON THE SAME END AS POSITION #1.
- ⑥ PACKAGING: (SEE TABLES)
"O" = TRAY PACKAGE. (THE STANDARD METHOD OF PACKAGING)
"G" = GPAX TAPE AND REEL
"T" = TUBE PACKAGING
- ⑦ PART NUMBERS WITH "R" FOLLOWING THE PART NUMBER
WILL HAVE RETENTIVE TAILS. (ONLY PARTS WITH TAIL
LENGTHS OF .105, .120 AND .150)
TWO PAIR OF PINS LOCATED APPROXIMATELY IN THE CENTER
OF 2X14 AND SMALLER SIZE ARE TO BE KINKED.
TWO PAIR OF PINS LOCATED ON EACH END OF 2X15 AND LARGER
ARE TO HAVE 2 PAIR OF PINS KINKED ON EACH END.
- ⑧ ADD AN "A" ON THE END OF THE PART NUMBER FOR
SPECIAL PRINTING (DATE CODE WEEK/YR)

mat'l. code				tolerances unless otherwise specified		CUSTOMER COPY		 www.fciconnect.com	
ltr	ecn no	dr	date	linear	.XX ±.01/0.3		projection	title	
G					.XXX ±.005/0.13			 HEADER, SLIMLINE, VERT. ASSEMBLY, 4-WALL	
				angles	.XXXX ±.0020/0.051		INCH/MM	product family	
					0° ±2°			HEADER	
				dr	M.FETROW	09/19/96	scale	code	
				enr	L.FYE	09/19/96		213	
				chr	L.FYE	09/19/96		sheet	
				appd	L.FYE	09/19/96		2 of	
sheet index	revision sheet						A		

cage code
22526

ACAD

Tous droits strictement reserves. Reproduction ou communication a des tiers interdite sous quelque forme que ce soit sans autorisation ecrite du proprietaire. Propriete de c FCI. Droits de reproduction FCI.



All rights strictly reserved. Reproduction or issue to third parties in any form whatever is not permitted without written authority from the proprietor. Property of FCI. Copyright FCI.

PRODUCT NO.

7225M - F ZZ T P X A

PLATING	
A	30u"/0.76u Au DUPLEX
B	30u"/0.76u GXT DUPLEX
G	15u"/0.38u DUPLEX
1	30u"/0.76u Au GOLD
2	5u"/0.12u Au GOLD
5	30u"/0.76u GXT
6	15u"/0.38u GXT
9	15u"/0.38u Au GOLD

TAIL LENGTH	
1	.105/2.67
2	.120/3.05
5	.150/3.81
8	.180/4.57

PACKAGING NOTE 6	
O	TRAY PACKAGING
G	GPAX TAPE & REEL
T	TUBE PACKAGING

RETENTION FEATURE NOTE 7	
R	RETENTIVE TAILS

DATE CODE NOTE 8	
	WEEK/YR

PLASTIC MAT'L NOTE 1		
0	BLACK PCT	SOLID REAR WALL
1	BLACK PCT	REAR POLARIZATION
2	BLUE PBT	SOLID REAR WALL
3	BLUE PBT	REAR POLARIZATION
4	GRAY PBT	SOLID REAR WALL
5	GRAY PBT	REAR POLARIZATION

	POSITIONS	DIM A	DIM B	DIM C	HDR. STYLE
10	2 x 5	.79/12.1	.710/18.03	.400/10.16	B
14	2 x 7	.99/25.2	.910/23.11	.600/15.24	C
16	2 x 8	1.09/27.7	1.010/25.65	.700/17.78	D
20	2 x 10	1.29/32.8	1.210/30.73	.900/22.86	D
24	2 x 12	1.49/37.9	1.410/35.81	1.100/27.94	D
26	2 x 13	1.59/40.4	1.510/38.35	1.200/30.48	D
30	2 x 15	1.79/45.5	1.710/43.43	1.400/35.56	D
34	2 x 17	1.99/50.6	1.910/48.51	1.600/40.64	D
36	2 x 18	2.09/53.1	2.010/51.05	1.700/43.18	D
40	2 x 20	2.29/58.2	2.210/56.13	1.900/48.26	D
44	2 x 22	2.49/63.3	2.410/61.21	2.100/53.34	D
50	2 x 25	2.79/70.9	2.710/68.83	2.400/60.96	D
60	2 x 30	3.29/83.6	3.210/81.53	2.900/73.66	D

mat'l. code -				tolerances unless otherwise specified				CUSTOMER COPY		 www.fciconnect.com	
ltr	ecn no	dr	date	linear	.XX ±.01/0.3			projection	title		
G					.XXX ±.005/0.13				HEADER, SLIMLINE, VERT. ASSEMBLY, 4-WALL		
					.XXXX ±.0020/0.051				product family HEADER code 213		
				angles	0° ±2°			 scale 1:1	size		sheet 3 of
				dr	M.FETROW	09/19/96	dwg no		A 72250		
				enr	L.FYE	09/19/96					
				chr	L.FYE	09/19/96					
				appd	L.FYE	09/19/96					
sheet index	revision sheet										

cage code 22526

ACAD